

*SCRIPT Public Workshop
January 20, 2010, Zurich, Switzerland*

SCRIPT Demo

Cristian Morariu

*Communication Systems Group CSG
Department of Informatics IFI
University of Zürich UZH*



Demo SCRIPT Applications

❑ Distribution Demo

- Simple application which shows that flows are distributed and that routing is deterministic

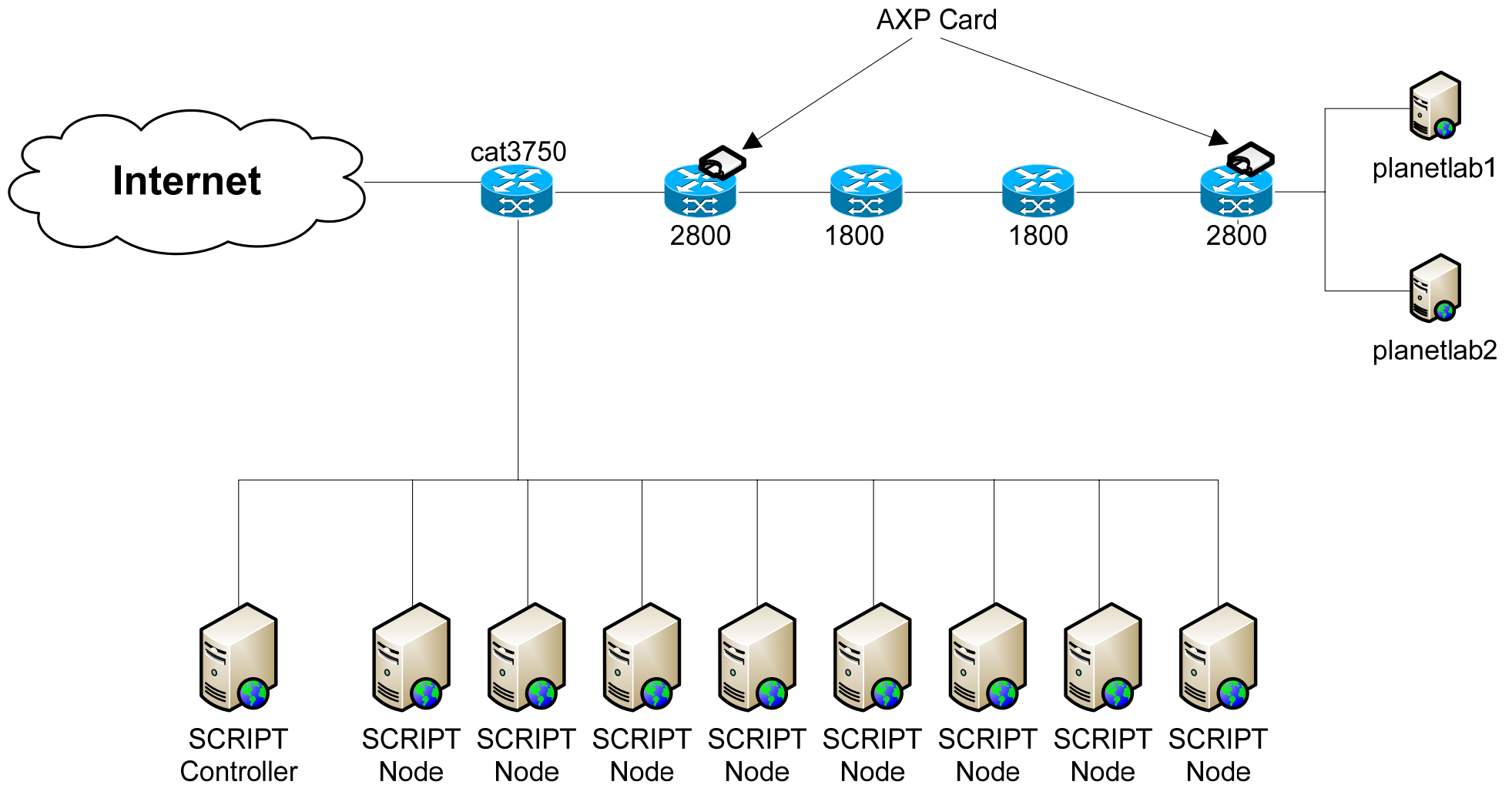
❑ Flow record storage

- Flow records are stored on several nodes
- One storage file every 5 minutes
- Query interface allows to query for specific IP addresses or port numbers

❑ Delay measurement

- Measures the delay between two of the routers in the testbed
- Based on packet observation time
- Low accuracy due to small accuracy in NetFlow v9 time fields
- Works as a concept, once an accurate timestamp field is introduced in NetFlow v9, it would work better

Demo Testbed



Templates and Traffic

- ❑ 2 templates used in the demo
- ❑ Template 20003
 - Used for the storage application
 - IP src/dest, port src/dest, bytes, packets, start time
- ❑ Template 20004
 - Used for delay calculation
 - 20003 fields + first 32 bytes of payload
 - exported after the first packet observed, so just one packet flows
- ❑ Traffic captured is TO PlanetLab nodes
- ❑ Besides PlanetLab traffic, also injected traffic possible